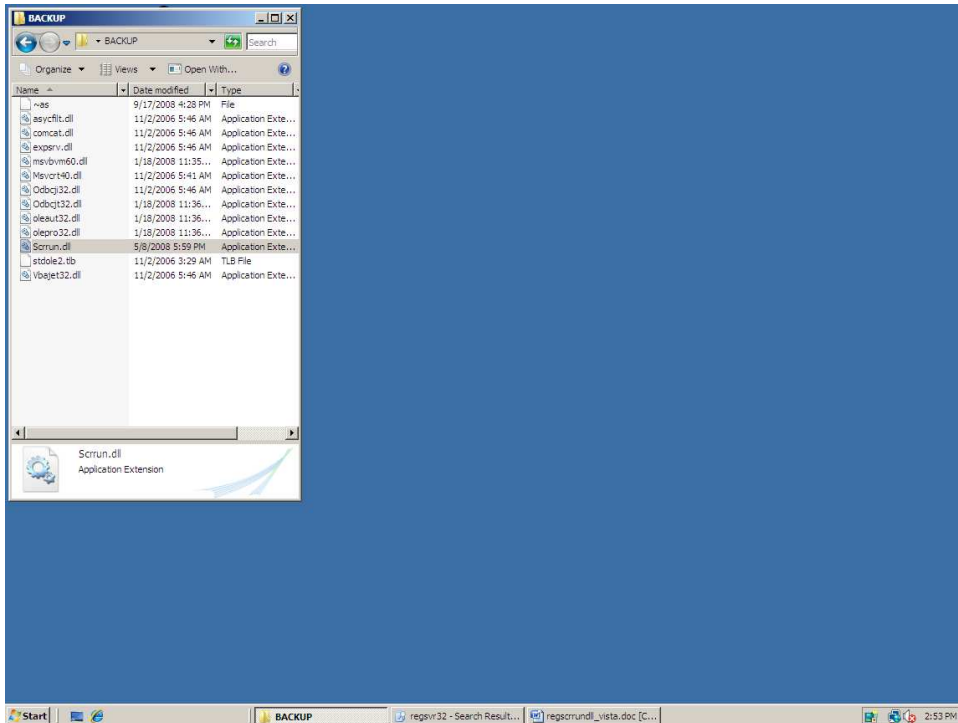


# Manually Registering a Scrrun.dll File

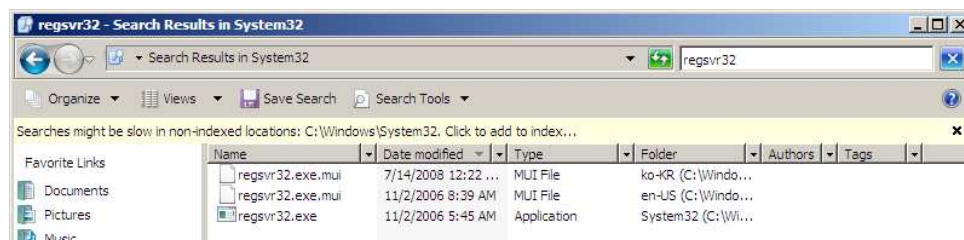
## WINDOWS VISTA AND WINDOWS 7

### MANUAL FILE REGISTRATION

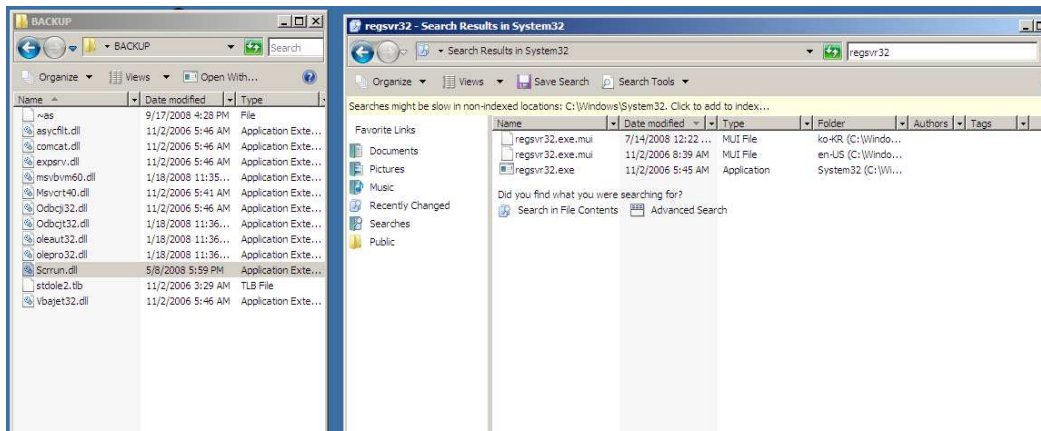
1. Using Windows Explorer or Computer, locate and open your local Artsystems GalleryPro folder. Adjust the window size to fit approximately 1/4 of your screen.



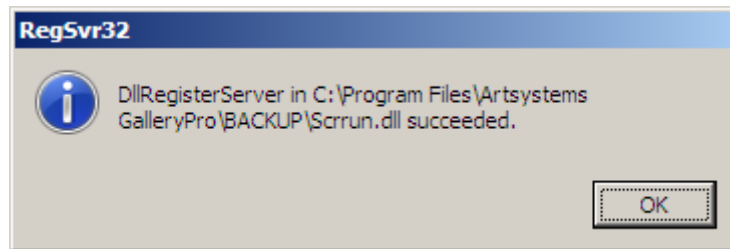
2. Locate the file called **Scrrun.dll** in the Artsystems GalleryPro\Backup folder.
3. If the file was downloaded from the Artsystems web site, save or copy it into the Artsystems GalleryPro folder.
4. Click the **Start** button (lower left), and click on **Computer**. Go to your **Hard Disk Drive** and find your **WINDOWS \ System32** folder. In the Search window, search your computer for the file named **regsvr32.exe**. The resulting search will look something like this:



5. Position the search window so you can see the Artsystems Window. There may be more than one **regsvr32.exe** found. **We will use the one without the mui extension.**



6. In the *Artsystems GalleryPro* window, locate the file **Scrrun.dll** and position your mouse pointer above it.
7. Select the file **Scrrun.dll** (left-click and hold button) and drag it on top of the **regsvr32.exe** file (release mouse button when **regsvr32.exe** turns blue).
8. Completion of the registration process will be indicated by the successful registration notification box (below). Click **OK**, then close windows. Open the *Artsystems* program (as you normally would) and test the issues that were not permissible earlier because of the absence or incorrect registration of the system file.



**If further assistance is needed, please contact Artsystems Support.**  
**Artsystems Support 212-620-5500 x 2 <mailto:Support@artsystems.com>**