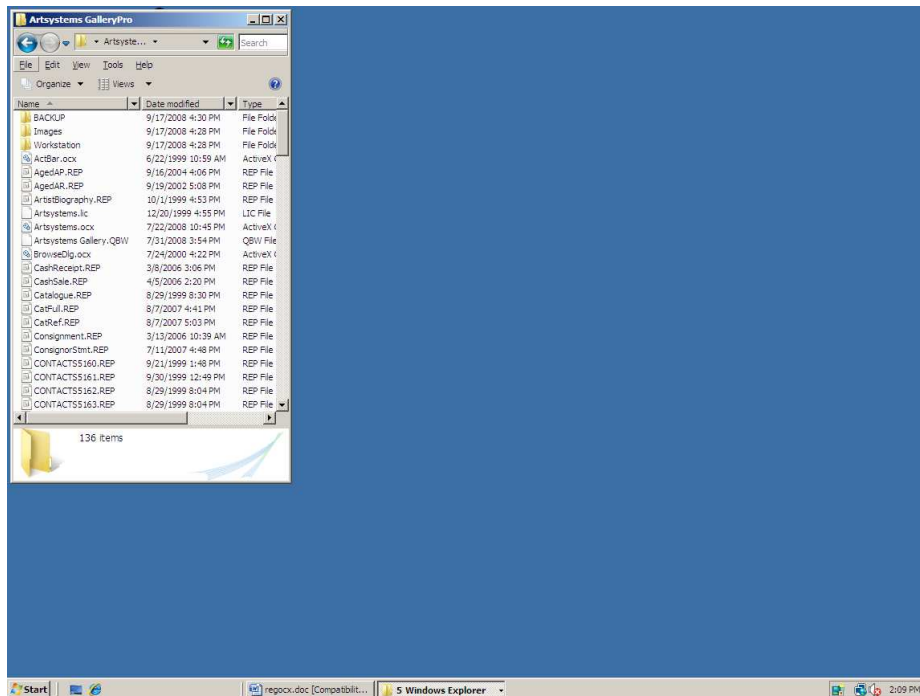


Manually Registering an OutputHoss.dll File

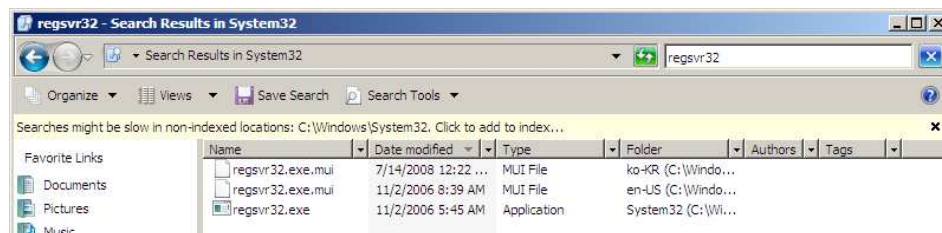
WINDOWS VISTA AND WINDOWS 7

MANUAL FILE REGISTRATION

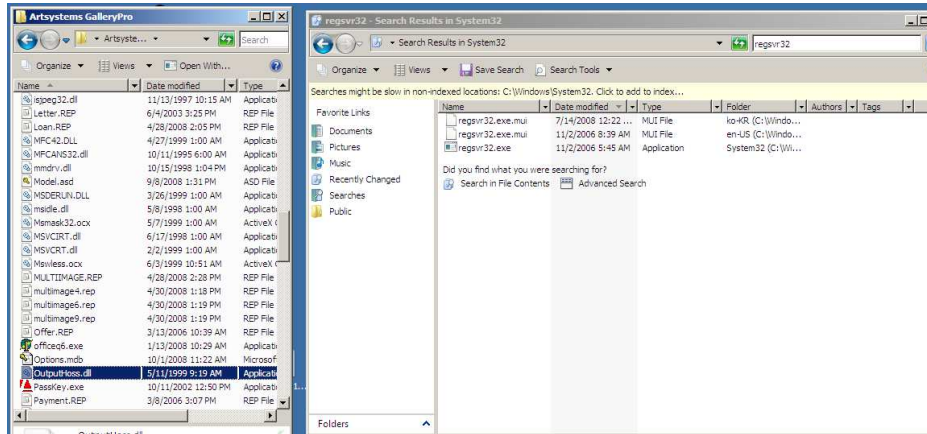
1. Using Windows Explorer or Computer, locate and open your local Artsystems GalleryPro folder. Adjust the window size to fit approximately 1/4 of your screen.



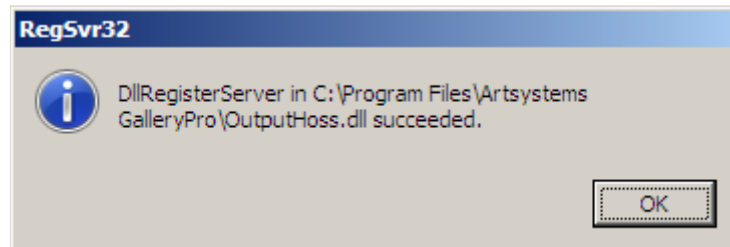
2. Locate the file called **OutputHoss.dll** in the Artsystems GalleryPro folder.
3. If the file was downloaded from the Artsystems web site, save or copy it into the Artsystems GalleryPro folder.
4. Click the **Start** button (lower left), and click on **Computer**. Go to your **Hard Disk Drive** and find your **WINDOWS \ System32** folder. In the Search window, search your computer for the file named **regsvr32.exe**. The resulting search will look something like this:



- Position the search window so you can see the *Artsystems Window*. There may be more than one **regsvr32.exe** found. **We will use the one without the mui extension.**



- In the *Artsystems GalleryPro* window, locate the file **OutputHoss.dll** and position your mouse pointer above it.
- Select the file **OutputHoss.dll** (left-click and hold button) and drag it on top of the **regsvr32.exe** file (release mouse button when regsvr32.exe turns blue).
- Completion of the registration process will be indicated by the successful registration notification box (below). Click **OK**, then close windows. Open the *Artsystems* program (as you normally would) and test the issues that were not permissible earlier because of the absence or incorrect registration of the system file.



If further assistance is needed, please contact Artsystems Support.
Artsystems Support 212-620-5500 x 2 <mailto:Support@artsystems.com>