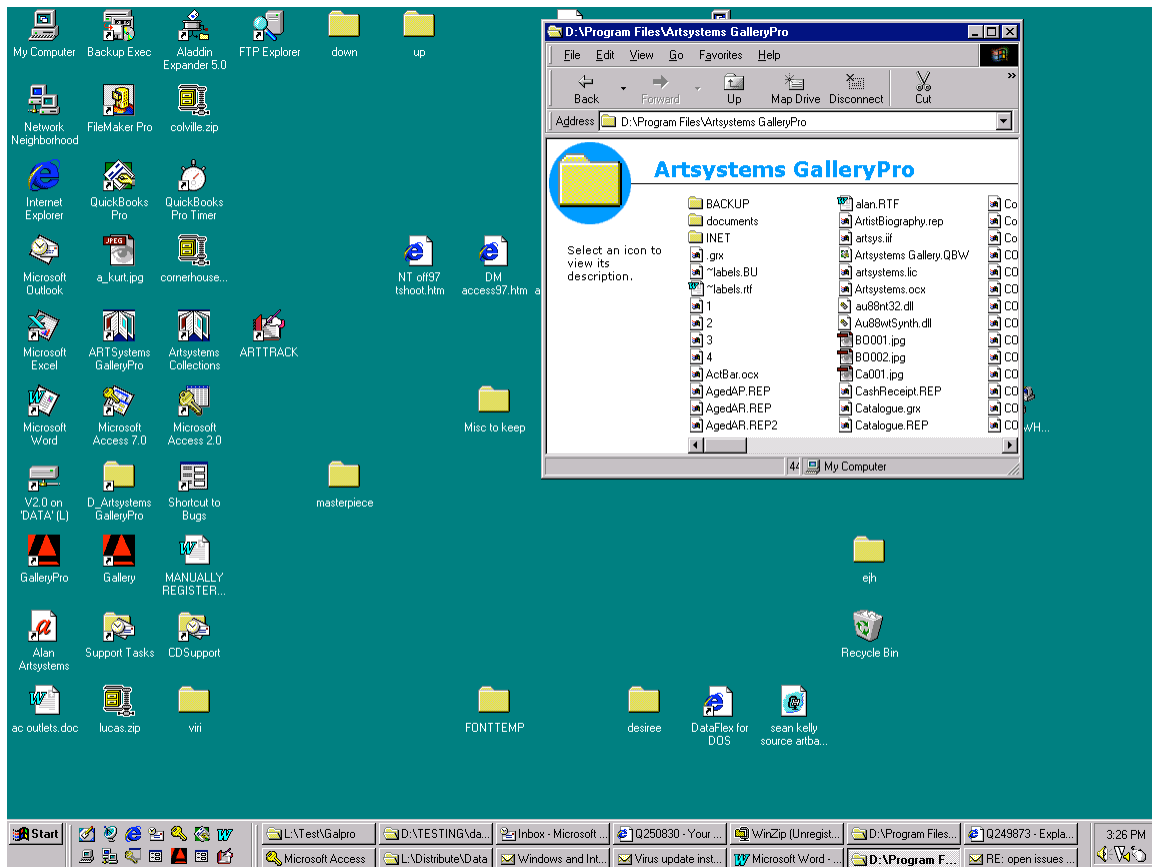


MANUALLY REGISTERING AN OUTPUTHOSS.DLL FILE

1. Using Windows Explorer or My Computer, locate and open your local Artsystems GalleryPro folder. Adjust the window size to fit approximately 1/4 of your screen.

Example:

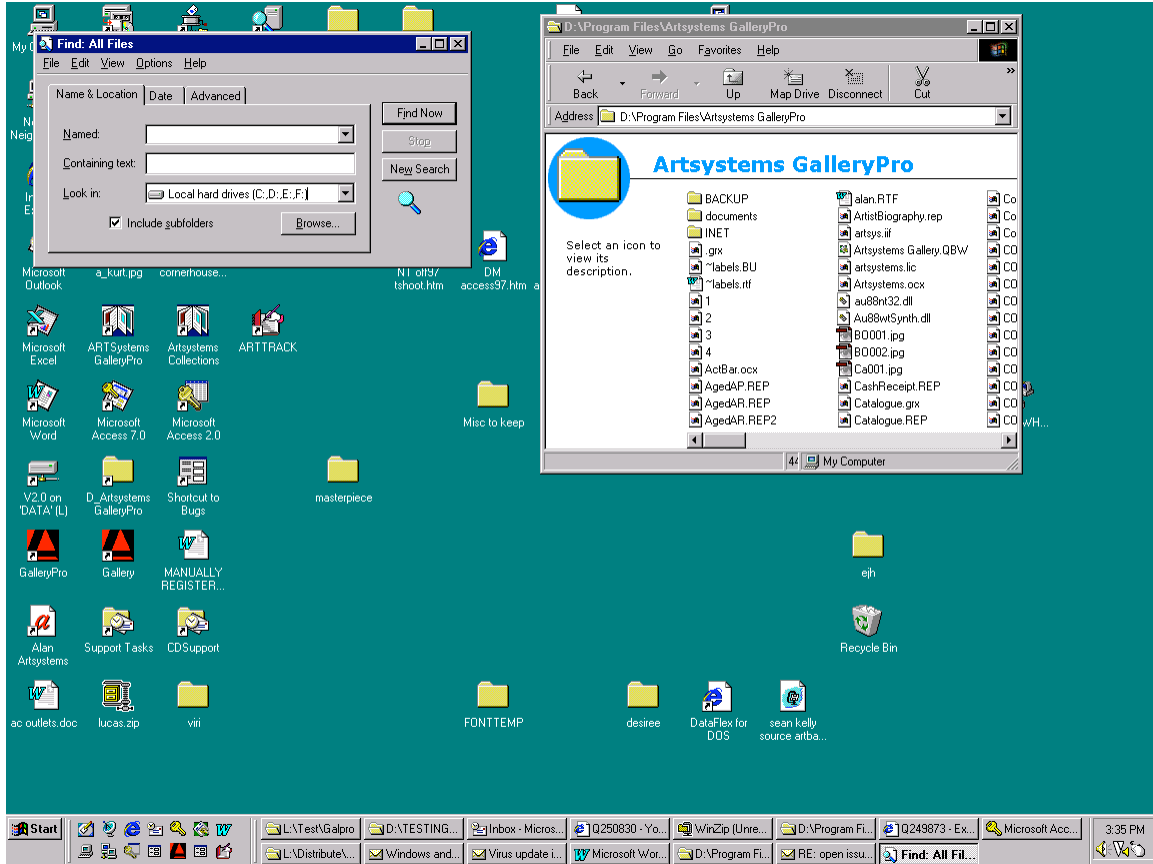


2. Copy the e-mail attachment **Outputhoss.dll** into the Artsystems GalleryPro folder. If it prompts you to overwrite existing file please select OK

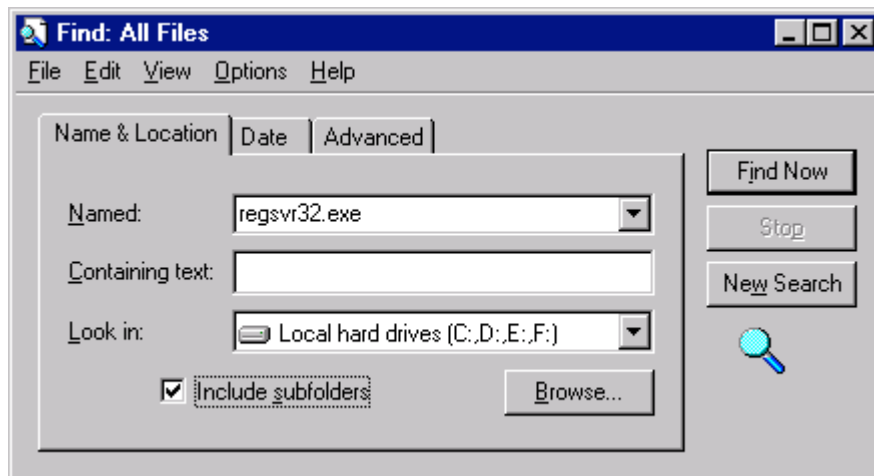
(If the file was downloaded from the Artsystems web site, save or copy it into the Artsystems GalleryPro folder).

3. Click the Start button (lower left), select Find, select Files or Folders. This enables a Find: All Files window.

Example:

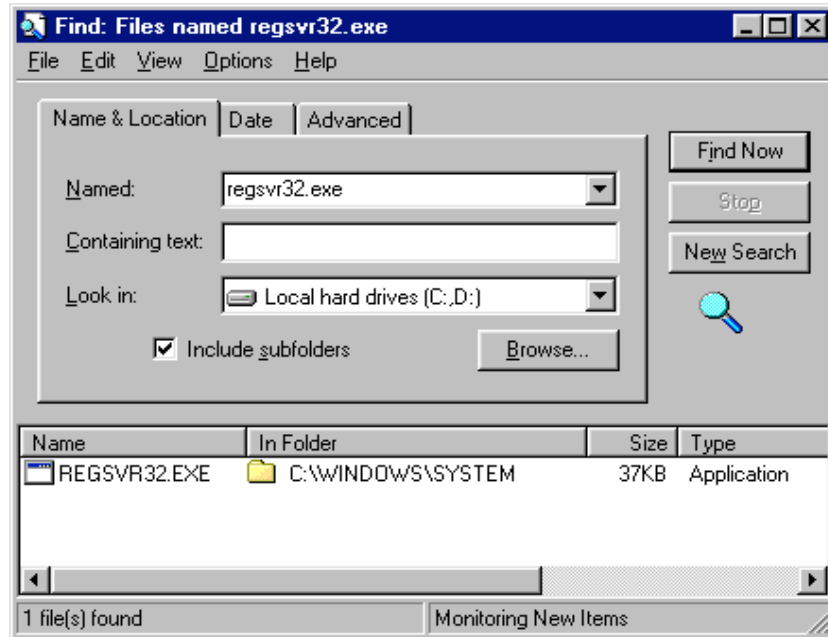


4. In the Find: All Files window, search your hard drive(s) for the file named **regsvr32.exe**

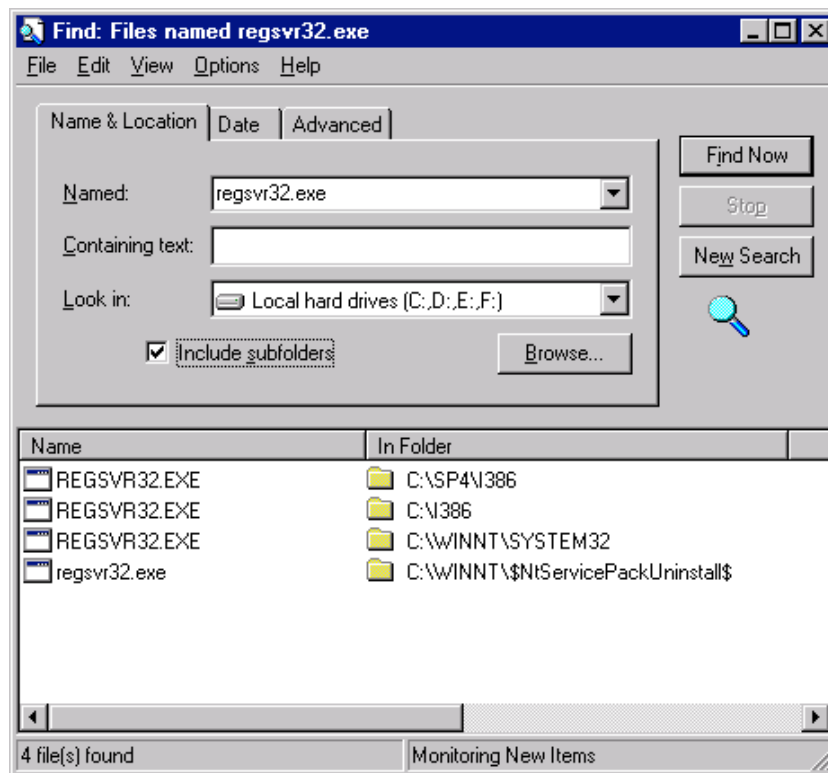


Click the Find Now button and the resulting search will look something like this:

(Windows 95/98)



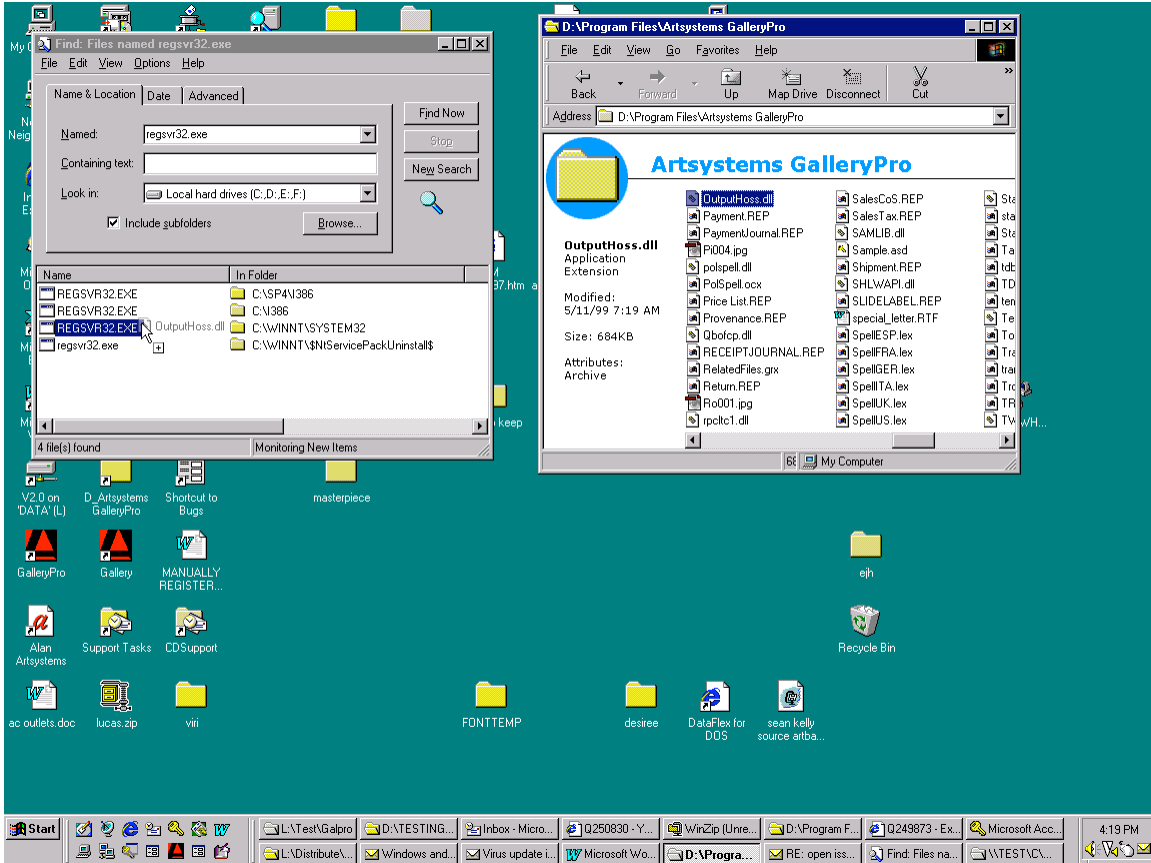
(Windows NT Workstation)



There may be more than one **regsvr32.exe** found. We will use the one located in **C:\Windows\System (Win95/98)** or in **C:\Winnt\System32 (NT Workstation)**.

5. In the Artsystems GalleryPro window, locate the file **Outputhoss.dll** and position your mouse pointer above it.

6. Select the file **Outputhoss.dll** (left-click and hold button) and drag it on top of the **regsvr32.exe** file (release mouse button when regsvr32.exe turns blue).



7. Completion of the registration process will be indicated by the successful registration notification box (below). Click OK, then close the Find: All Files window and the Artsystems GalleryPro window. Open the Artsystems program (as you normally would) and test the issues that were not permissible earlier because of the absence or incorrect registration of the system file.

