

Parallels Best Practices

For Use with Artsystems Software

Artsystems recommends running *Parallels Desktop*® 6 for Mac on any Macintosh computer with an Intel processor (1.66 GHz or greater). To run 64-bit operating systems in virtual machines an Intel Core 2 or later processor is required. A minimum 1 GB of memory is required, however, 2 GB of memory or more is recommended.

Installing Parallels Desktop

If you purchased *Parallels Desktop* from the *Parallels* online store, download the latest build from *Parallels* Download Center. When the download is complete, open the *Parallels Desktop* DMG package file. To start the installation, double-click Install.

If you purchased a boxed copy of *Parallels Desktop*, insert the *Parallels Desktop* installation disk into the optical drive of your Mac. Open the *Parallels Desktop* DMG package and double-click Install.

Parallels Desktop will connect to the *Parallels* update server and check for available updates.

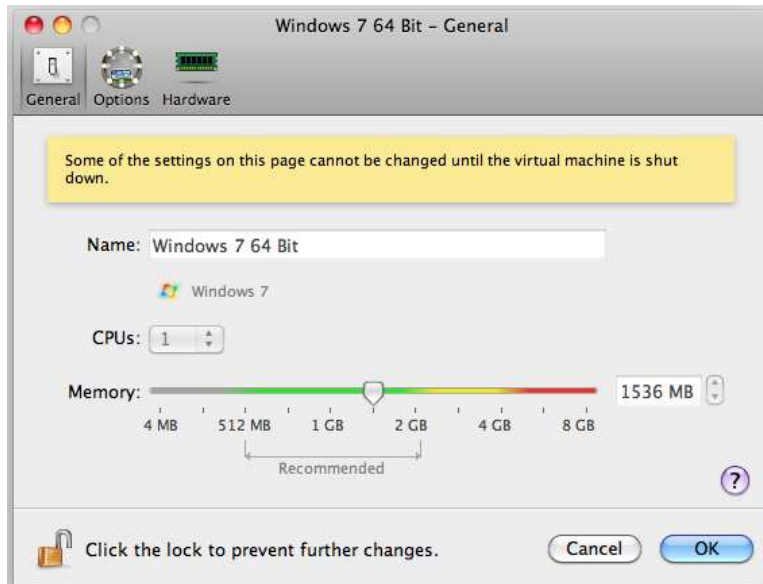
If there is a *Parallels Desktop* version newer than yours, you will see the message offering you to install the latest version of *Parallels Desktop* or that in the DMG package. If you click Install current, the version present in the DMG package will be installed. If you click Download and install the new version, the latest version of *Parallels Desktop* will be downloaded to your Mac. If there are no updates available or your Mac is not connected to the internet, the base version will be installed.

Install *Parallels Desktop* using the recommended defaults. When the Installation is finished you will be asked for your Windows disk. Insert and enter your product key to install Windows

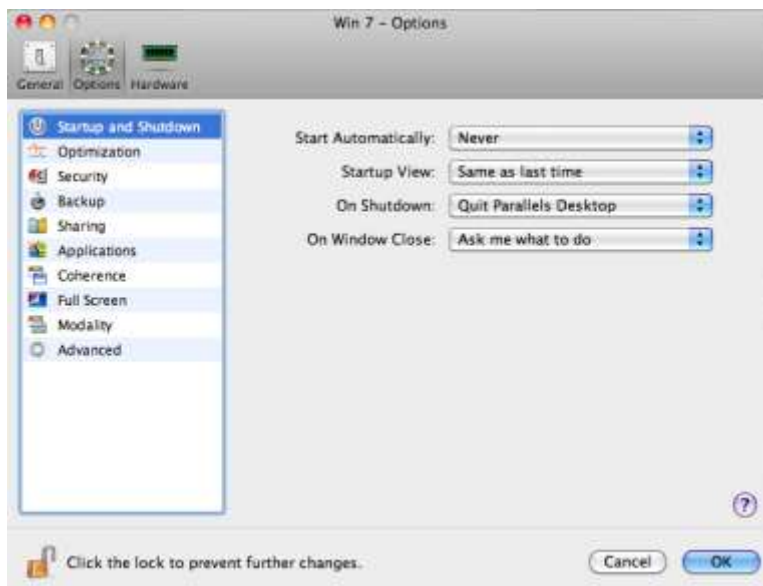
Configuring Parallels Desktop 6 for Mac

To view the configuration of a running virtual machine, choose Configure from the Virtual Machine menu.

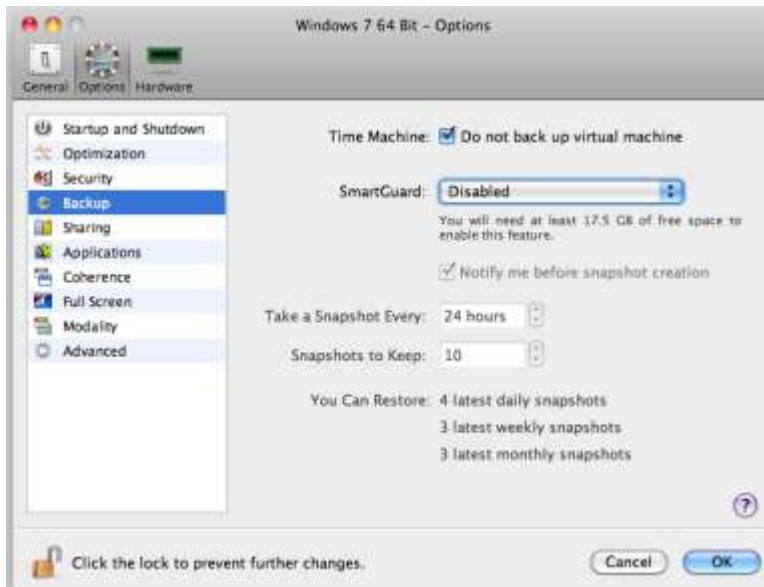
The **General** tab allows you to set the memory allocated to *Parallels*. There is a recommended range. You may also select the number of CPU's



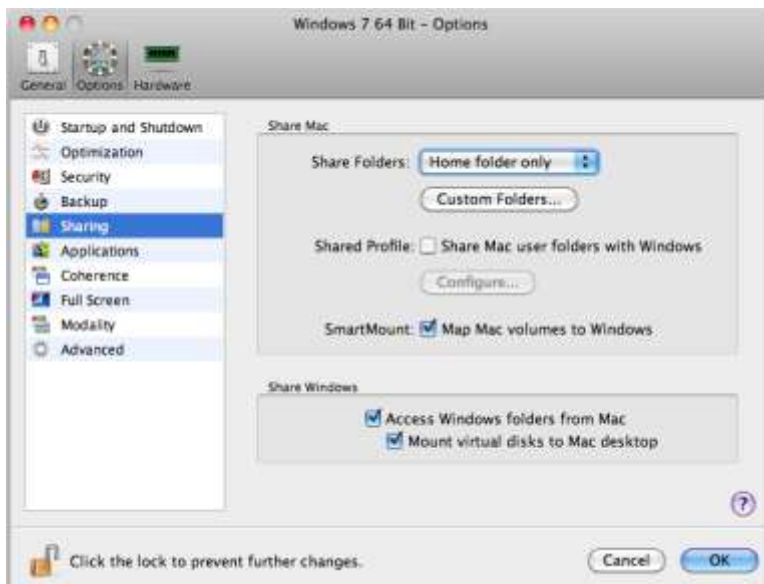
The **Options** tab contains menus for adjusting how *Parallels* operates on your Mac.



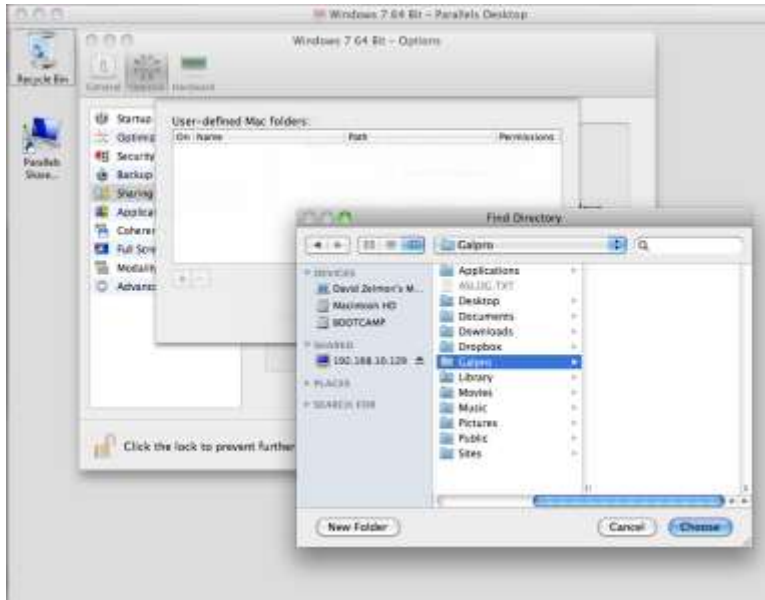
Artsystems recommends that *Time Machine* be disabled for the virtual machine.



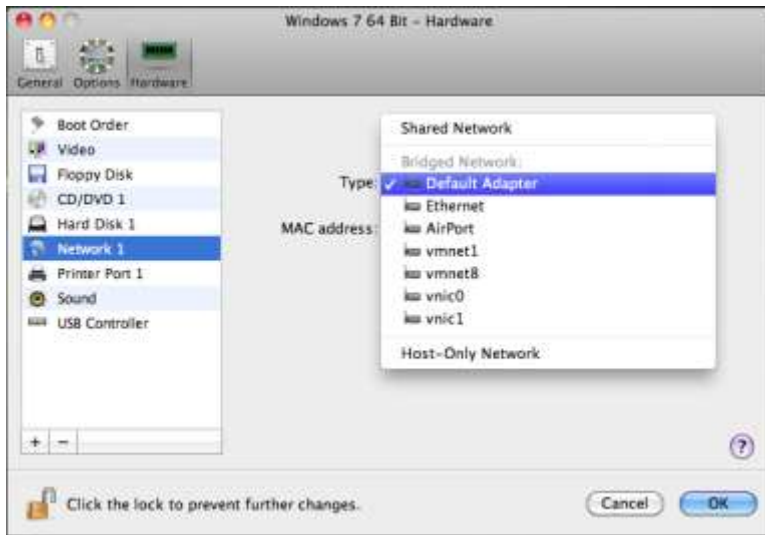
This is also where you may adjust the folder sharing settings.



Here we are sharing the *Artsystems GalleryPro* folder in the Mac users folder.



The **Hardware** tab allows you to adjust hardware parameters. Here we have selected the Default adaptor under Bridged Networking.



If further assistance is needed, please contact Artsystems Support.

Artsystems Support 212-620-5500 x 2

<mailto:Support@artsystems.com>